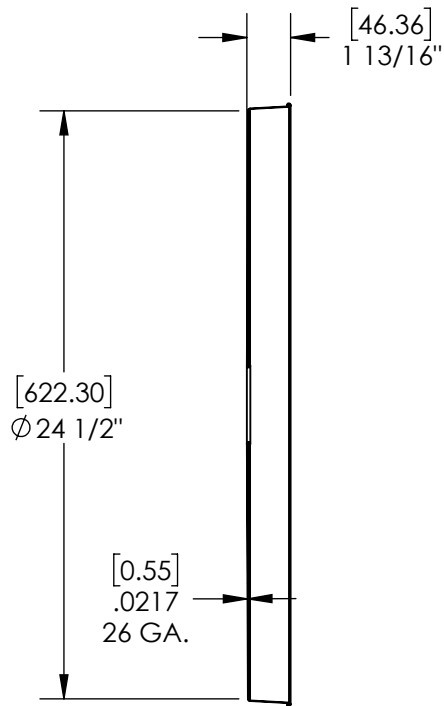


# GALVANIZED STEEL DRUM COVER - CAN-CAP-G

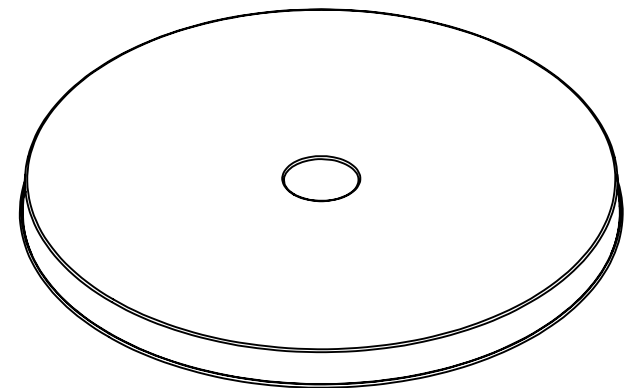
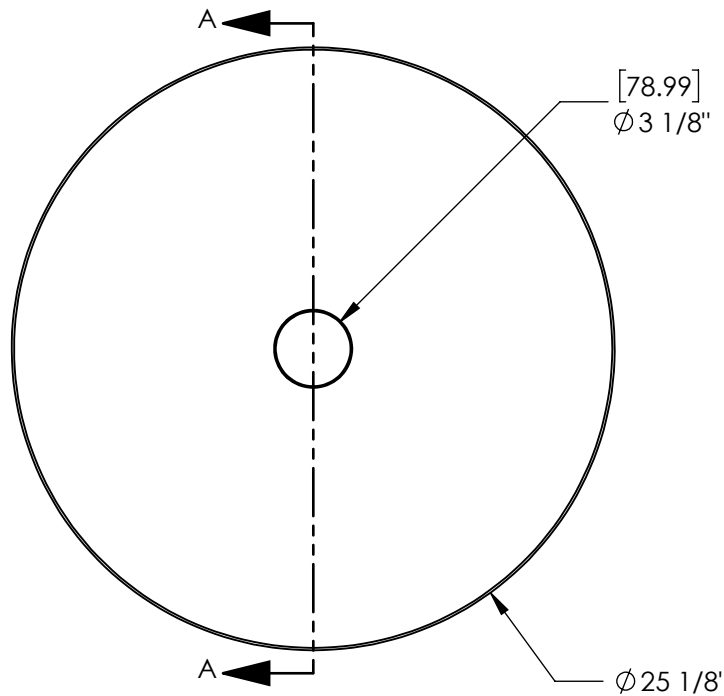
APPROX WEIGHT: 3.86 lbs.  
 DOES NOT INCLUDE WEIGHT OF POWER OR PACKAGING!!!

\*\*\* ANY ADDITIONS, DELETIONS, OR OMISSIONS MUST BE CORRECTED ON THIS DRAWING AS THIS DRAWING WILL BE CONSIDERED ALL INCLUSIVE \*\*\*

ALL GRAPHICS PROVIDED ARE FOR REFERENCE ONLY. IF CERTAIN DIMENSIONS ARE CRITICAL PLEASE VERIFY THOSE DIMENSIONS WITH YOUR SALESPERSON



SECTION A-A



## STANDARD FEATURES

- MODEL NUMBER IS CAN-CAP-G
- OVERALL DIAMETER IS  $\varnothing 25 \frac{1}{8}$ "
- INNER DIAMETER IS  $\varnothing 24 \frac{1}{2}$ "
- OVERALL HEIGHT IS  $1 \frac{13}{16}$ "
- DISPOSAL HOLE DIAMETER IS  $\varnothing 3 \frac{1}{8}$ "
- MADE OF 26 GAUGE GALVANIZED STEEL
- DRUM COVER IS COMPATIBLE WITH OPEN HEAD DRUMS
- FOR USE ON 55 GALLON DRUMS
- PERIMETER RIM IS BEADED FOR SAFETY

## SPECIAL FEATURES

NONE

DIMENSION TOLERANCE  $\pm 1/4$ "

**APPROVAL**

I, THE UNDERSIGNED, AGREE THAT THE PRODUCT AS REPRESENTED SATISFIES DESIGN AND DIMENSION REQUIREMENTS. I ALSO ACKNOWLEDGE MY DUTY TO CONFIRM PRODUCT AND INSTALLATION COMPLIANCE WITH ALL APPLICABLE FEDERAL, STATE AND LOCAL REGULATIONS AND STANDARDS.

**UNITS REQUIRING APPROVAL DRAWINGS OR MODIFIED ARE NON-RETURNABLE**

As drawn       As marked

Signed: \_\_\_\_\_ Date: \_\_\_\_\_

Printed Name: \_\_\_\_\_

LEAD TIME WILL START UPON RECEIPT OF SIGNED APPROVAL DRAWING

FOR INTERNAL USE ONLY PROJECT SIGN OFF	
SALES	
ENG.	
FAB.	
POWER	

DISTRIBUTOR'S NAME:		P.O.#
VESTIL MANUFACTURING		X
DRAWN BY: TJM		DATE: 6/1/2011
REFERENCE: X		SALES: X
QUOTED LEAD TIME: X		SCALE: 1:8
QUOTE # X		FILE NAME: 30-007-211